

New Equipment Warranty

Limited Warranty

The manufacturer gives you the following limited warranty for this product if it was originally purchased for use, not resale, from BISSELL BigGreen Commercial or a BISSELL BigGreen Commercial-Authorized Retail Dealer.

Lifetime warranty on roto-molded polyethylene tank, 5-years on motor and all electrical parts, 1-year on tools. The manufacturer will repair or replace, free of charge, to the original purchaser, warranted parts which are found to be defective in material or workmanship.

This limited warranty does not apply to any part subjected to accident, abuse, or alteration, misuse, damage caused by fire or act of God, the use of voltages other than indicated on the serial number plate of this product or service of this product by other than a trained service technician.

The manufacturer does not authorize any person or representative to assume or grant any other warranty obligation with the sale of this product.

The manufacturer's limited warranty is valid only if you retain proof of purchase from BISSELL BigGreen Commercial or a BISSELL BigGreen Commercial-Authorized Retail Dealer for this product. If you purchase this product from any other source, your purchase is "AS IS," which means the manufacturer grants you no warranty, and that you, not the manufacturer, assume the entire risk of the quality and performance of this product, including the entire cost of any necessary servicing or repairs of any defects.

The manufacturer's liability for damages to you for any costs whatsoever arising out of this statement of limited warranty shall be limited to the amount paid for this product at the time of original purchase, and the manufacturer shall not be liable for any direct, indirect, consequential or incidental damages arising out of the use or inability to use this product.

Some states do not allow the exclusion or limitation of incidental or consequential damages, so the above limitation or exclusion may not apply to you.

ALL EXPRESS AND IMPLIED WARRANTIES FOR THIS PRODUCT, INCLUDING IMPLIED WARRANTIES OF MERCHANTABILITY AND FITNESS FOR A PARTICULAR PURPOSE, ARE LIMITED IN DURATION TO THE WARRANTY PERIOD, AND NO WARRANTIES, WHETHER EXPRESS OR IMPLIED, WILL APPLY AFTER THIS PERIOD.

Some states do not allow limitations on the duration of implied warranties, so the above limitation may not apply to you.

This warranty gives you specific legal rights, and you may also have other rights which vary from state to state.

Bissell®
BigGreen Commercial™

BISSELL BigGreen Commercial
100 Armstrong Road | Suite 101 | Plymouth, MA 02360
Phone: 800-242-1378 | Fax: 877-672-4566

www.bissellcommercial.com

Make a copy of this card for future reference.

2014 © BISSELL BigGreen Commercial. All rights reserved.

6-QUART BACKPACK VACUUM

SAFETY, OPERATION AND MAINTENANCE MANUAL WITH PARTS LIST

Please read before use!

MODEL BGPRO6A
1.5 HP, 115 Volt

REGISTER
YOUR
MACHINE!



Reliable Power

Fastest Pick-Up

Maximum Airflow

Innovative Design

Lightweight

Durable

Bissell®
BigGreen Commercial™

IMPORTANT INFORMATION AND SAFETY INSTRUCTIONS

Register your Machine – Return your Warranty Registration Card!

Serial No: _____



Dear Valued Customer,

Congratulations on the purchase of your BISSELL BigGreen Commercial BGPRO6A 6-Quart Backpack Vacuum! The world of carpet cleaning is becoming more high-tech and competitive and we strive to provide you with the most innovative products. Our backpack vacuum is yet another example of this, bringing a new dimension to carpet and upholstery cleaning with its cutting-edge features, quality and value.

Please review this manual paying careful attention to the Safety Instructions section. Keep in mind that any unnecessary damage, neglect or abuse of this machine will void your warranty. You can be confident that simple maintenance will ensure that your Backpack Vacuum provides quality performance for many years to come.

If warranty questions arise, please consult your manual or contact your distributor. Should you have any questions regarding maintenance, replacing parts or ordering parts, please call an authorized distributor.

Before you begin using your backpack vacuum, thoroughly review the Owner's Manual.

Again, congratulations on the purchase of your BISSELL BigGreen Commercial BGPRO6A 6-Quart Backpack Vacuum!

Questions or Comments?



BISSELL BigGreen Commercial

100 Armstrong Road | Suite 101 | Plymouth, MA 02360
Phone: 800-242-1378 | Fax: 877-672-4566

www.bissellcommercial.com



Warranty Registration

Please take a moment to register your machine. Fill out the information below and mail back to BISSELL BigGreen Commercial immediately.

The warranty starts on the purchase date by the original purchaser, subject to proof of purchase. Please immediately register your machine by returning this Machine Registration Card at the time of purchase. If proof of purchase cannot be identified, the warranty start date is ninety (90) days after the inventory stocking date at the distributor's warehouse.

Machine Model _____ Purchase Date _____

Motor Type _____ Serial No. _____

Place of Purchase _____

Shipped To _____

Your Name _____ Phone _____

E-mail _____ Fax _____

Address Line 1 _____

Address Line 2 _____

City _____ State _____ Zip _____

Comments:

Mail to:

BISSELL BigGreen Commercial
100 Armstrong Road | Suite 101 | Plymouth, MA 02360

**See reverse side for warranty information.
Make a copy of this card for future reference.**

2014 © BISSELL BigGreen Commercial. All rights reserved.

©2014 BISSELL BigGreen Commercial. All rights reserved. All word marks, logos, product configurations and registered trademarks are owned and used under the authority of BISSELL BigGreen Commercial.

BGPRO6A 6-QUART BACKPACK VACUUM

By BISSELL BigGreen Commercial

Please fill out the following information:

Model No: _____

Serial No: _____

Distributor Name: _____

Distributor Phone No: _____

Date of Purchase: _____



Built With Pride
in the USA



BISSELL BigGreen Commercial
100 Armstrong Road | Suite 101 | Plymouth, MA 02360
Phone: 800-242-1378 | Fax: 877-672-4566
www.bissellcommercial.com

Table of Contents

New Equipment Warranty	4
Returned Material Authorization (RMA) Procedure	4
1.0 Safety Instructions	5
2.0 Grounding Instructions	6
3.0 Care of your Backpack Vacuum Cleaner	7
4.0 Operating and Assembly Instructions.	8
5.0 Trouble Shooting Guide	10
6.0 Machine Schematic Drawing	11
7.0 Machine Parts List	12
8.0 5-Piece Tool Kit	13

New Equipment Warranty
Lifetime on roto-molded polyethylene tank, 5-years on motor and all electrical parts, 1-year on tools.

Limited Warranty
The manufacturer gives you the following limited warranty for this product if it was originally purchased for use, not resale, from BISSELL BigGreen Commercial or a BISSELL BigGreen Commercial-Authorized Retail Dealer.

Lifetime warranty on roto-molded polyethylene tank, 5-years on motor and all electrical parts, 1-year on tools. The manufacturer will repair or replace, free of charge, to the original purchaser, warranted parts which are found to be defective in material or workmanship.

This limited warranty does not apply to any part subjected to accident, abuse, or alteration, misuse, damage caused by fire or act of God, the use of voltages other than indicated on the serial number plate of this product or service of this product by other than a trained service technician.

The manufacturer does not authorize any person or representative to assume or grant any other warranty obligation with the sale of this product.

The manufacturer’s limited warranty is valid only if you retain proof of purchase from BISSELL BigGreen Commercial or a BISSELL BigGreen Commercial-Authorized Retail Dealer for this product. If you purchase this product from any other source, your purchase is “AS IS,” which means the manufacturer grants you no warranty, and that you, not the manufacturer, assume the entire risk of the quality and performance of this product, including the entire cost of any necessary servicing or repairs of any defects.

The manufacturer’s liability for damages to you for any costs whatsoever arising out of this statement of limited warranty shall be limited to the amount paid for this product at the time of original purchase, and the manufacturer shall not be liable for any direct, indirect, consequential or incidental damages arising out of the use or inability to use this product.

Some states do not allow the exclusion or limitation of incidental or consequential damages, so the above limitation or exclusion may not apply to you.

ALL EXPRESS AND IMPLIED WARRANTIES FOR THIS PRODUCT, INCLUDING IMPLIED WARRANTIES OF MERCHANTABILITY AND FITNESS FOR A PARTICULAR PURPOSE, ARE LIMITED IN DURATION TO THE WARRANTY PERIOD, AND NO WARRANTIES, WHETHER EXPRESS OR IMPLIED, WILL APPLY AFTER THIS PERIOD.

Some states do not allow limitations on the duration of implied warranties, so the above limitation may not apply to you.

This warranty gives you specific legal rights, and you may also have other rights which vary from state to state.

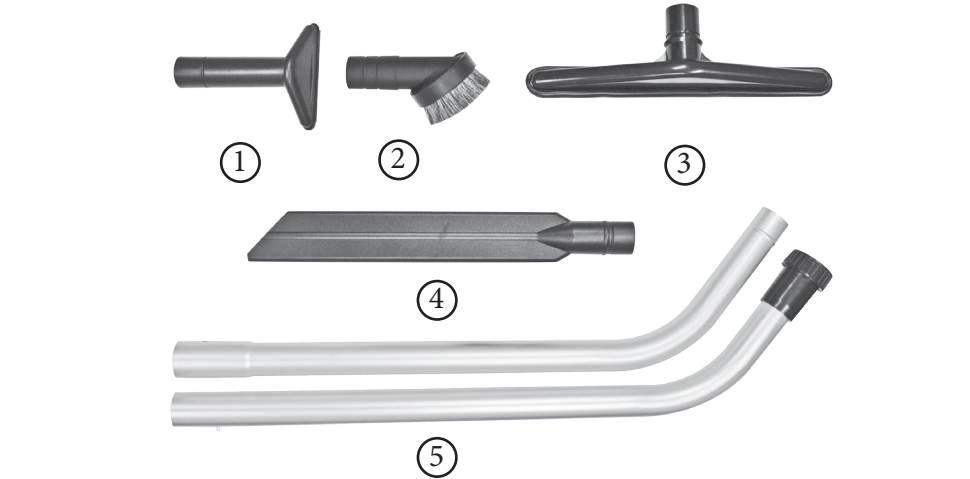
©2013 BISSELL BigGreen Commercial. All rights reserved.
All word marks, logos, product configurations and registered trademarks are owned and used under the authority of BISSELL BigGreen Commercial.

Returned Material Authorization (RMA) Procedure

Original purchaser (distributor/service center) must contact the manufacturer to follow correct RMA/ warranty procedures. Must include a copy of RMA Sheet enclosed in the box with returned item. No returns shall be authorized unless proper RMA procedures are followed. It is the responsibility of the distributor to repair the customer’s equipment as soon as possible. If the distributor does not have the facilities to repair the equipment, it may be shipped or taken to an authorized service center for repair.

Customer must contact the distributor prior to working on or changing out any parts, etc. Manufacturer must issue an RMA Sheet containing approved labor time and replacement parts. Do not send parts or equipment back to manufacturer without an RMA number and approval. No labor will be paid for, nor part costs paid for or reimbursed that have not been previously approved by the manufacturer. All warranty work must be approved and authorized to qualify and appropriate warranty procedures must be followed.

8.0 5-Piece Standard Tool Kit



Drawing No.	Item No.	Description	Quantity
1	10-0031	5" Upholstery Tool	1.00
2	10-0037	3" Round Dust Brush	1.00
3	10-0032	14" Scalloped Floor Tool	1.00
4	10-0033	17" Crevice Tool	1.00
5	10-0029	2-Piece, 2-Bend Button Lock Wand	1.00

7.0 Machine Parts List

Drawing No.	Item No.	Description	Quantity
1	10-007-6	6-Quart Cloth Bag for 6-Quart Backpack	1.00
2	10-0197	6-Quart Paper Bags (10 Pack)	0.10
3	BP-6-L-GREEN	6-Quart Backpack Lid - BISSELL GREEN	1.00
4	10-0155	Hose Cuff Straight	1.00
5	10-0024	1-1/2" Black Vacuum Hose	1.00
6	10-0195	Swivel Cuff	1.00
7	10-0008-B	Dome Filter with Bag Support	1.00
8	10-0012	Whisper Motor	1.00
9	10-0199	Vacuum Motor Gasket	1.00
10	10-0023	Shoulder and Waist Belt Washer	4.00
11	10-0022	Shoulder and Waist Belt Screw	4.00
12	10-0021	Shoulder and Waist Belt	1.00
13	10-0020	Cushioned Back Pad	1.00
14	BP-6-T-GREEN	6-Quart Backpack Tank - BISSELL GREEN	1.00
15	10-0015	1/4" Flat Washer	4.00
16	10-0014	Motor Screw	4.00
17	BP-6-B-GREEN	6-Quart Backpack Base - BISSELL GREEN	1.00
18	10-0016-6	6-Quart Deflector Plate	1.00
19	10-0017	Deflector Plate Screw	3.00
20	10-0017	Sound Dampening Band	1.00
21	10-0018	6-Quart Dual Cell Noise Filter	1.00
22	10-0019-6	Screw for Well Nut	1.00
23	10-0070	Well Nut for Cord Lock	1.00
24	10-0027-A	Strain Relief Nut	1.00
25	10-0027	Strain Relief	1.00
26	10-0026	17" Power Cord (Cord Only)	1.00
27	10-0028	50-Foot Electrical Cord	1.00
28	10-0025	On/Off Switch	1.00

1.0 Safety Instructions

READ THIS MANUAL BEFORE OPERATING EQUIPMENT. KNOW THE PROPER OPERATION, SAFETY INSTRUCTIONS, CORRECT APPLICATIONS AND THE LIMITATIONS OF THIS EQUIPMENT **BEFORE USE**.

The Backpack vacuum will afford you many years of trouble free operating satisfaction, provided it is given the proper care. All parts have passed rigid quality control standards prior to being assembled to produce the finished product. Prior to packaging, your Backpack Vacuum was again inspected for assurance of flawless assembly.

The Backpack Vacuum is protectively packed to prevent damage in shipment. We recommend that upon delivery, unpack the unit and inspect it for any possible damage. Only a visual inspection will reveal damage that may have occurred.

If damage is discovered, immediately notify the transportation company that delivered your vacuum. As a shipper, we are unable to report any claim for damage. You must originate any claim within five (5) days.

This manual is for your protection and information. Please read carefully since failure to follow precautions could result in discomfort or injury.

Reduce the Risk of Fire, Electric Shock or Injury

DO NOT USE ON WET SURFACES. DO NOT EXPOSE TO RAIN. STORE INDOORS.

- DO NOT leave the vacuum unattended when plugged in. Unplug from the outlet when not in use and before servicing.
- DO NOT vacuum up any liquids. This vacuum is for dry use only! To avoid electric shock, DO NOT expose to rain. Store indoors. DO NOT use on wet surfaces.
- This is not a toy. Close attention is necessary when used around or near children.
- Use only as described in the safety instructions. Use only manufacturer-recommended attachments, accessories, replacement parts and filters.
- DO NOT use the Backpack Vacuum with damaged cord or plug. If the vacuum is not working as it should, because it has been dropped, damaged, left outdoors or exposed to water, contact an authorized service center or manufacturer.
- DO NOT pull or carry by the cord, use cord as a handle, close a door on the cord, or pull the cord around sharp edges or corners. Keep cord away from heated surfaces.
- DO NOT unplug the vacuum by pulling the cord. To unplug, grasp the plug, not the cord.
- DO NOT handle the plug of the vacuum with wet hands.
- DO NOT put objects into openings. DO NOT use with any opening blocked. Keep free of dust, lint, hair and anything that may reduce air flow.
- Keep hair, loose clothing, fingers and all body parts away from opening and moving parts.
- DO NOT pick up anything that is burning or smoking such as cigarettes, matches or hot ashes.

1.0 Safety Instructions Continued

Reduce the Risk of Fire, Electric Shock or Injury

- DO NOT use without the proper cloth filtration bag, paper filter bag and other filters in place. Failure to do so, will VOID your warranty.
- DO NOT use the vacuum to pick up flammable or combustible liquids such as gasoline or use in areas where they may be present.
- Use extra care when cleaning on stairs.
- DO NOT use where oxygen or anesthetics are used.
- Turn off all controls before unplugging. Make sure the on/off switch is in the OFF position.
- The extension cord provided with this unit is 50-foot, 16/3-gauge wire and MUST be used with this unit to ensure grounding protection.
- Replace damaged or worn parts immediately with genuine, original equipment parts to maintain safety and to protect your limited warranty.
- DO NOT lubricate the motor.
- DO NOT tie extension cord to pigtail cord. This will damage the cord and will not be covered under warranty.
- DO NOT overstretch the safety power cord between the vacuum and the electrical outlet in the wall.
- DO NOT use without all filters correctly secured in place.
- When using the vacuum with a powerhead tool and connection, always turn OFF the vacuum and nozzle tool before connecting or disconnecting either the hose or power nozzle. Depending on your vacuum model, the hose may contain electrical wires. DO NOT use when damaged, cut or punctured.

Always turn OFF the vacuum before connecting, disconnecting or working on the vacuum. The vacuum must be connected to a properly grounded outlet only (see grounding instructions, Section 2.0).

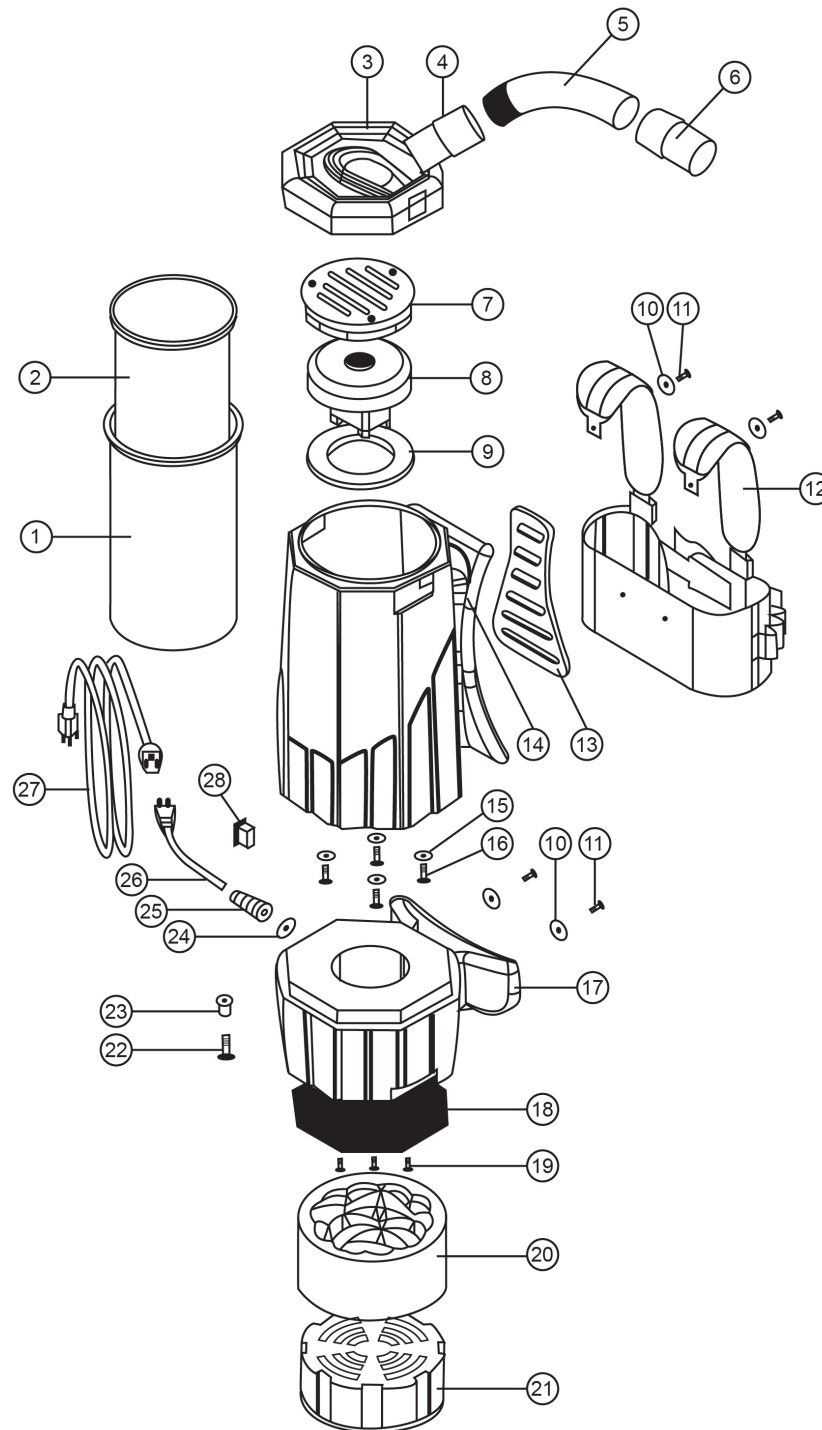
2.0 Grounding Instructions

DANGER: IMPROPER GROUNDING METHOD CAN RESULT IN A RISK OF ELECTRIC SHOCK.

Electrical equipment must be grounded. If it should malfunction or breakdown, grounding provides a path of least resistance for electrical current and reduces the risk of electric shock. The vacuum is equipped with a cord containing a grounding conductor and grounding plug. The plug must be inserted into an appropriate outlet that is properly installed and grounded in accordance with all local codes and ordinances.

If repair or replacement of the cord or plug is necessary, DO NOT connect the grounded wire to a flat bed terminal. The green insulated wire, with or without yellow stripes, is the grounding wire.

6.0 Machine Schematic Drawing



5.0 Troubleshooting Guide

CAUTION: Always disconnect power cord before servicing vacuum.
WARNING: Repairs should only be performed by an authorized service center.

PROBLEM: Loss of vacuum

CAUSE	SOLUTION
Cap is damaged	Inspect and replace if needed
Faulty vacuum motor	Call manufacturer or service center
Full paper bag filter	Replace paper filter bag
Clogged hose or wand	Remove obstruction
Loose or broken fan	Call manufacturer or service center

PROBLEM: Motor is not running

CAUSE	SOLUTION
Faulty on/off switch	Call manufacturer or service center
Power cord defective	Call manufacturer or service center
Loose connection or wiring	Call manufacturer or service center
Motor defective	Call manufacturer or service center
Blown fuse or tripped circuit breaker	Replace fuse or reset circuit breaker

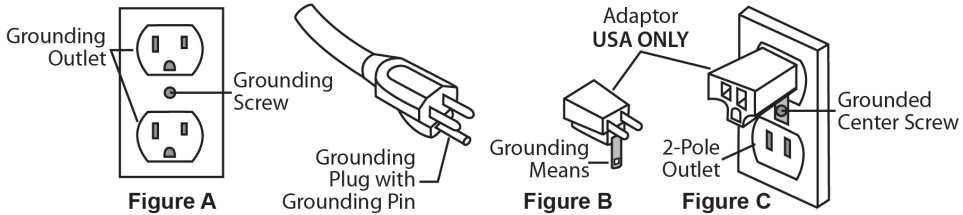
PROBLEM: Dust blowing from vacuum when running

CAUSE	SOLUTION
Full paper bag	Replace filter bag
Paper filter bag not installed properly	Reinstall or replace paper filter bag properly
Cloth filter bag is dirty	Clean cloth filter bag
Cloth or paper filter bag is torn	Replace

2.0 Grounding Instructions Continued

The electric vacuum is for use on a normal 120 volt circuit. It has a grounded plug that fits the outlet illustrated in Figure A. If a properly grounded outlet is not available, a temporary adapter, such as the adapter illustrated in Figure B and C, may be used to connect the plug into a 2-pole outlet, as shown in Figure C.

The temporary adapter should be used only until a properly grounded outlet, Figure A, can be installed by a qualified electrician. The green color rigid ear lug or grounding means extending from the adapter must be connected to a permanent ground, such as a properly grounded outlet box cover. Whenever the adapter is used, it must be held in place by its grounding means and a metal screw, as shown in Figure C.



WARNING:

Improper connection of the equipment grounding conductor can result in a risk of electric shock. Check with a qualified electrician or service person if you are in doubt as to whether the outlet is properly grounded. DO NOT modify the plug provided with the equipment. If it will not fit into the outlet, have a proper outlet installed by a qualified electrician.

NOTE: In Canada, the use of a temporary adapter is not permitted by the Canadian Electrical Code.

3.0 Care of your Backpack Vacuum Cleaner

Treat your vacuum as you would any other high grade precision made product. Dropping, unreasonable bumping across thresholds and other misuses may result in a damaged unit which will not be covered under warranty.

When not in use, the power cord should be wrapped around the molded-in cord wrap for storage. After each use, wipe the vacuum body, accessories and power cord with a slightly damp cloth.

WARNING: DO NOT use vacuum without the proper cloth filtration bag, paper filter bag and other filters in place. Failure to do so, will VOID your warranty.

If using vacuum in a paint, sawdust or drywall environment, you must dispose of paper filter bag and shakeout cloth filter bag after each use. Failure to do so will cause severe damage to your vacuum and VOID your warranty. Dispose of paper filter bag in a fireproof container. The combination of urethane and wood, may result in combustion.

4.0 Operation and Assembly Instructions

DRY PREPARATION AND OPERATION ONLY! DO NOT USE ON WET SURFACES.

This vacuum is equipped with an air-thru motor and is designed for dry pickup only. Unpack the carton and remove the vacuum and attachments (if purchased with tools).

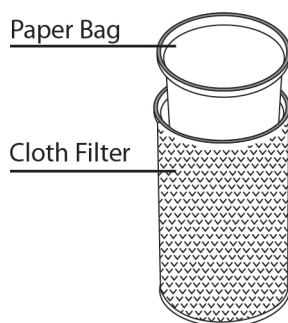
Getting Started:

1. Make sure the on/off switch is in the OFF position.
2. Remove lid and check to make sure you have both a cloth filter bag and paper filter bag in place. Place lid back onto the vacuum body, tightening securely. Both bags must be used at all times. Any damage resulting from the lack of using both bags will VOID your warranty.
3. Wrap the safety power cord around the molded-in cord wrap on the side of the vacuum. Do not tie or loop the pigtail cord with the extension cord.
4. Loosen the shoulder and waist belt straps and slide vacuum on.
5. Connect and tighten the waist belt making sure the majority of the weight is on your hips and not your shoulders.
6. Adjust the shoulder straps for comfort.
7. Connect the sternum straps for added support and ideal fit.
8. Plug the vacuum into a properly grounded outlet.
9. Turn unit to the ON position and proceed with vacuuming.
10. Always store vacuum, safety power cord and tools in a cool, dry place indoors.

NOTE: The weight of the vacuum should be distributed on your hips. Adjust any strap as needed for your custom fit.

To Change Paper Filter Bag:

1. Unscrew lid and lift lid off of the body.
2. Remove full paper bag from the tank and dispose of properly.
3. Take new paper filter bag and set inside cloth filter bag, expanding it to the sides of the cloth filter bag.
4. Place lid back onto the vacuum body, tightening securely.



Cloth Filter Maintenance:

The cloth filter should be inspected and cleaned each time you empty the tank. DO NOT wash the cloth filter. It could cause shrinkage of the cloth and damage to the gasket. Simply shake off any dust or loose particles and brush the exposed surface with a soft bristle brush.

CAUTION: Always exercise caution when handling the vacuum. Dropping the vacuum could cause permanent damage to the internal components.

4.0 Operation and Assembly Instructions Continued

HEPA Cloth Filter Maintenance:

When the white disk inside your dome filter is discolored, replace it with a new HEPA filter with bag support. Replacement time frame of the HEPA filter depends on the frequency and application of use. For best results, replace every six (6) months.

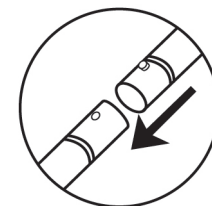
IMPORTANT: Following the instructions above is critical in prolonging the life of your vacuum. All filters must be used at all times. Failure to do so will VOID your warranty.

Assembly of Attachments:

The vacuum comes assembled, but you will need to install the hose to the wand and the wand to the attachment.

Wand Assembly (for 2-Piece Wand Only):

- Align the button lock of the upper wand section with the opening for the button lock on the lower wand section.
- Push the sections together until the button lock slides into place and the lock is secured.

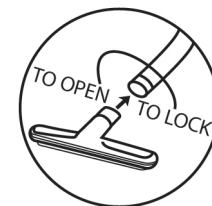


To Connect Wand to Hose:

- Insert the tapered end of the wand into the swivel cuff at the end of the hose.

To Connect Wand to Attachments:

- Turn wand nut counterclockwise approximately four (4) complete turns.
- Insert the tool into the wand and coupling.
- While holding the tool in place, turn nut clockwise until wand nut is fully locked.



New Equipment Warranty

Limited Warranty

The manufacturer gives you the following limited warranty for this product if it was originally purchased for use, not resale, from BISSELL BigGreen Commercial or a BISSELL BigGreen Commercial-Authorized Retail Dealer.

Lifetime warranty on roto-molded polyethylene tank, 5-years on motor and all electrical parts, 1-year on tools. The manufacturer will repair or replace, free of charge, to the original purchaser, warranted parts which are found to be defective in material or workmanship.

This limited warranty does not apply to any part subjected to accident, abuse, or alteration, misuse, damage caused by fire or act of God, the use of voltages other than indicated on the serial number plate of this product or service of this product by other than a trained service technician.

The manufacturer does not authorize any person or representative to assume or grant any other warranty obligation with the sale of this product.

The manufacturer's limited warranty is valid only if you retain proof of purchase from BISSELL BigGreen Commercial or a BISSELL BigGreen Commercial-Authorized Retail Dealer for this product. If you purchase this product from any other source, your purchase is "AS IS," which means the manufacturer grants you no warranty, and that you, not the manufacturer, assume the entire risk of the quality and performance of this product, including the entire cost of any necessary servicing or repairs of any defects.

The manufacturer's liability for damages to you for any costs whatsoever arising out of this statement of limited warranty shall be limited to the amount paid for this product at the time of original purchase, and the manufacturer shall not be liable for any direct, indirect, consequential or incidental damages arising out of the use or inability to use this product.

Some states do not allow the exclusion or limitation of incidental or consequential damages, so the above limitation or exclusion may not apply to you.

ALL EXPRESS AND IMPLIED WARRANTIES FOR THIS PRODUCT, INCLUDING IMPLIED WARRANTIES OF MERCHANTABILITY AND FITNESS FOR A PARTICULAR PURPOSE, ARE LIMITED IN DURATION TO THE WARRANTY PERIOD, AND NO WARRANTIES, WHETHER EXPRESS OR IMPLIED, WILL APPLY AFTER THIS PERIOD.

Some states do not allow limitations on the duration of implied warranties, so the above limitation may not apply to you.

This warranty gives you specific legal rights, and you may also have other rights which vary from state to state.

Bissell®
BigGreen Commercial™

BISSELL BigGreen Commercial
100 Armstrong Road | Suite 101 | Plymouth, MA 02360
Phone: 800-242-1378 | Fax: 877-672-4566

www.bissellcommercial.com

Make a copy of this card for future reference.

2014 © BISSELL BigGreen Commercial. All rights reserved.

10-QUART BACKPACK VACUUM

SAFETY, OPERATION AND MAINTENANCE MANUAL WITH PARTS LIST

Please read before use!

MODEL BGPRO 10A
1.5 HP, 115 Volt

REGISTER
YOUR
MACHINE!



Reliable Power

Fastest Pick-Up

Maximum Airflow

Innovative Design

Lightweight

Durable

Bissell®
BigGreen Commercial™

IMPORTANT INFORMATION AND SAFETY INSTRUCTIONS

Register your Machine – Return your Warranty Registration Card!

Serial No: _____



Dear Valued Customer,

Congratulations on the purchase of your BISSELL BigGreen Commercial BGPRO10A 10-Quart Backpack Vacuum! The world of carpet cleaning is becoming more high-tech and competitive and we strive to provide you with the most innovative products. Our backpack vacuum is yet another example of this, bringing a new dimension to carpet and upholstery cleaning with its cutting-edge features, quality and value.

Please review this manual paying careful attention to the Safety Instructions section. Keep in mind that any unnecessary damage, neglect or abuse of this machine will void your warranty. You can be confident that simple maintenance will ensure that your Backpack Vacuum provides quality performance for many years to come.

If warranty questions arise, please consult your manual or contact your distributor. Should you have any questions regarding maintenance, replacing parts or ordering parts, please call an authorized distributor.

Before you begin using your backpack vacuum, thoroughly review the Owner's Manual.

Again, congratulations on the purchase of your BISSELL BigGreen Commercial BGPRO10A 10-Quart Backpack Vacuum!

Questions or Comments?



BISSELL BigGreen Commercial
100 Armstrong Road | Suite 101 | Plymouth, MA 02360
Phone: 800-242-1378 | Fax: 877-672-4566

www.bissellcommercial.com



Warranty Registration

Please take a moment to register your machine. Fill out the information below and mail back to BISSELL BigGreen Commercial immediately.

The warranty starts on the purchase date by the original purchaser, subject to proof of purchase. Please immediately register your machine by returning this Machine Registration Card at the time of purchase. If proof of purchase cannot be identified, the warranty start date is ninety (90) days after the inventory stocking date at the distributor's warehouse.

Machine Model _____ **Purchase Date** _____

Motor Type _____ **Serial No.** _____

Place of Purchase _____

Shipped To _____

Your Name _____ **Phone** _____

E-mail _____ **Fax** _____

Address Line 1 _____

Address Line 2 _____

City _____ **State** _____ **Zip** _____

Comments:

Mail to:

BISSELL BigGreen Commercial
100 Armstrong Road | Suite 101 | Plymouth, MA 02360

**See reverse side for warranty information.
Make a copy of this card for future reference.**

2014 © BISSELL BigGreen Commercial. All rights reserved.

©2014 BISSELL BigGreen Commercial. All rights reserved. All word marks, logos, product configurations and registered trademarks are owned and used under the authority of BISSELL BigGreen Commercial.

BGPRO10A 10-QUART BACKPACK VACUUM

By BISSELL BigGreen Commercial

Please fill out the following information:

Model No: _____

Serial No: _____

Distributor Name: _____

Distributor Phone No: _____

Date of Purchase: _____



BISSELL BigGreen Commercial
100 Armstrong Road | Suite 101 | Plymouth, MA 02360
Phone: 800-242-1378 | Fax: 877-672-4566
www.bissellcommercial.com

Table of Contents

New Equipment Warranty.....	4
Returned Material Authorization (RMA) Procedure	4
1.0 Safety Instructions	5
2.0 Grounding Instructions	6
3.0 Care of your Backpack Vacuum Cleaner	7
4.0 Operating and Assembly Instructions.	8
5.0 Trouble Shooting Guide.....	10
6.0 Machine Schematic Drawing.....	11
7.0 Machine Parts List	12
8.0 5-Piece Tool Kit	13

New Equipment Warranty
Lifetime on roto-molded polyethylene tank, 5-years on motor and all electrical parts, 1-year on tools.

Limited Warranty
The manufacturer gives you the following limited warranty for this product if it was originally purchased for use, not resale, from BISSELL BigGreen Commercial or a BISSELL BigGreen Commercial-Authorized Retail Dealer.
Lifetime warranty on roto-molded polyethylene tank, 5-years on motor and all electrical parts, 1-year on tools. The manufacturer will repair or replace, free of charge, to the original purchaser, warranted parts which are found to be defective in material or workmanship.

This limited warranty does not apply to any part subjected to accident, abuse, or alteration, misuse, damage caused by fire or act of God, the use of voltages other than indicated on the serial number plate of this product or service of this product by other than a trained service technician.

The manufacturer does not authorize any person or representative to assume or grant any other warranty obligation with the sale of this product.

The manufacturer's limited warranty is valid only if you retain proof of purchase from BISSELL BigGreen Commercial or a BISSELL BigGreen Commercial-Authorized Retail Dealer for this product. If you purchase this product from any other source, your purchase is "AS IS," which means the manufacturer grants you no warranty, and that you, not the manufacturer, assume the entire risk of the quality and performance of this product, including the entire cost of any necessary servicing or repairs of any defects.

The manufacturer's liability for damages to you for any costs whatsoever arising out of this statement of limited warranty shall be limited to the amount paid for this product at the time of original purchase, and the manufacturer shall not be liable for any direct, indirect, consequential or incidental damages arising out of the use or inability to use this product.

Some states do not allow the exclusion or limitation of incidental or consequential damages, so the above limitation or exclusion may not apply to you.

ALL EXPRESS AND IMPLIED WARRANTIES FOR THIS PRODUCT, INCLUDING IMPLIED WARRANTIES OF MERCHANTABILITY AND FITNESS FOR A PARTICULAR PURPOSE, ARE LIMITED IN DURATION TO THE WARRANTY PERIOD, AND NO WARRANTIES, WHETHER EXPRESS OR IMPLIED, WILL APPLY AFTER THIS PERIOD.

Some states do not allow limitations on the duration of implied warranties, so the above limitation may not apply to you.

This warranty gives you specific legal rights, and you may also have other rights which vary from state to state.

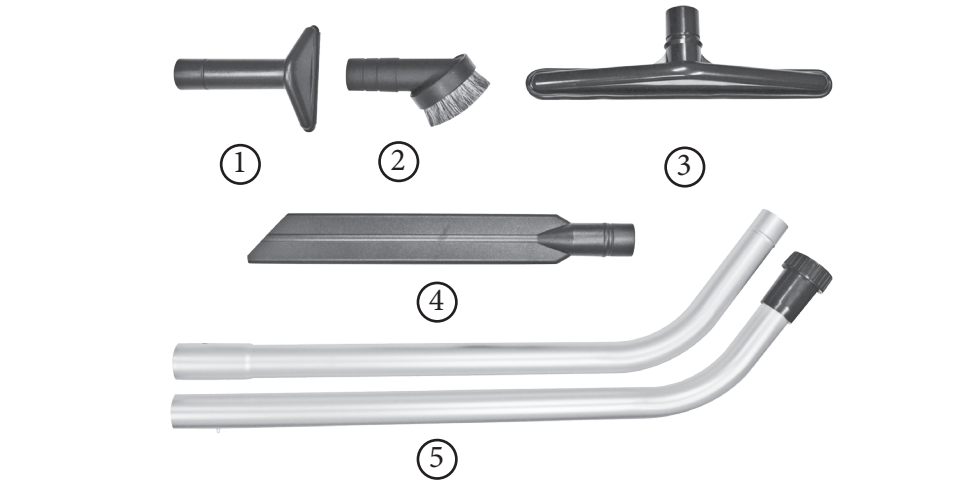
©2013 BISSELL BigGreen Commercial. All rights reserved.
All word marks, logos, product configurations and registered trademarks are owned and used under the authority of BISSELL BigGreen Commercial.

Returned Material Authorization (RMA) Procedure

Original purchaser (distributor/service center) must contact the manufacturer to follow correct RMA/ warranty procedures. Must include a copy of RMA Sheet enclosed in the box with returned item. No returns shall be authorized unless proper RMA procedures are followed. It is the responsibility of the distributor to repair the customer's equipment as soon as possible. If the distributor does not have the facilities to repair the equipment, it may be shipped or taken to an authorized service center for repair.

Customer must contact the distributor prior to working on or changing out any parts, etc. Manufacturer must issue an RMA Sheet containing approved labor time and replacement parts. Do not send parts or equipment back to manufacturer without an RMA number and approval. No labor will be paid for, nor part costs paid for or reimbursed that have not been previously approved by the manufacturer. All warranty work must be approved and authorized to qualify and appropriate warranty procedures must be followed.

8.0 5-Piece Standard Tool Kit



Drawing No.	Item No.	Description	Quantity
1	10-0031	5" Upholstery Tool	1.00
2	10-0037	3" Round Dust Brush	1.00
3	10-0032	14" Scalloped Floor Tool	1.00
4	10-0033	17" Crevice Tool	1.00
5	10-0029	2-Piece, 2-Bend Button Lock Wand	1.00

7.0 Machine Parts List

Item No.	Item Description	Qty.	Drawing No.
10-0007-10	10qt. Cloth Bag for Backpack	1	1
10-0006	10qt. Paper Bags/10 pack	0.1	2
10-0003	Lid Latch	2	3
10-0004	Lid Rivet	4	4
BP-10-L-GREEN	10qt. Backpack Lid - BISSELL Green	1	5
10-0024	1-1/2" Black Vacuum Hose	4	6
10-0195	Swivel Cuff	1	7
10-0008-B	Dome Filter w/ Bag Support	1	8
10-0012	Whisper Motor	1	9
10-0022	Shoulder and Waist Belt Screw	4	11
10-0023	Shoulder & Waist Belt Washer	4	12
10-0021	Shoulder & Waist Belt	1	13
BP-10-T-GREEN	10qt. Backpack Tank - BISSELL Green	1	14
10-0020	Cushioned Back Pad	1	15
10-0015	1/4" Flat Washer	4	16
10-0014	Motor Screw	4	17
BP-10-B-GREEN	10qt. Backpack Bottom - BISSELL Green	1	18
10-0016-10	10qt. Deflector Plate	1	19
10-0017	Deflector Screw	3	20
10-0018	Sound Dampening Band	1	21
10-0019	10qt. Dual Cell Noise Filter	1	22
10-0070	Screw for Well Nut	1	23
10-0069	Well Nut for Cord Lock	1	24
10-0027-A	Strain Relief Nut	1	25
10-0027	Pigtail Strain Relief	1	26
10-0026	17" Power Cord	1	27
10-0028	50-Foot Electrical Cord	1	28
10-0025	On/Off Switch	1	29
10-0204-B	Washer for Rivet 10-0205	6	Not Pictured
10-0205	Body Rivet for Backpack	6	Not Pictured
10-0223-A	2-Piece Head Attachment	1	Not Pictured

1.0 Safety Instructions

READ THIS MANUAL BEFORE OPERATING. KNOW THE PROPER OPERATION, CORRECT APPLICATIONS AND THE LIMITATIONS OF THIS EQUIPMENT **BEFORE** USE.

This backpack vacuum will afford you many years of trouble free operating satisfaction, provided it is given the proper care. All parts have passed rigid quality control standards prior to being assembled to produce the finished product. Prior to packaging, your backpack vacuum was again inspected for assurance of flawless assembly.

This backpack vacuum is protectively packed to prevent damage in shipment. We recommend that upon delivery, unpack the unit and inspect it for any possible damage. Only a visual inspection will reveal damage that may have occurred.

If damage is discovered, immediately notify the transportation company that delivered your vacuum. As a shipper, we are unable to report any claim for damage. You must originate any claim within five (5) days.

This manual is for your protection and information. Please read carefully since failure to follow precautions could result in discomfort or injury.

Reduce the Risk of Fire, Electric Shock or Injury

DO NOT USE ON WET SURFACES. DO NOT EXPOSE TO RAIN. STORE INDOORS.

- DO NOT leave the vacuum when plugged in. Unplug from the outlet when not in use and before servicing.
- DO NOT vacuum up any liquids. This vacuum is for dry use only! To avoid electric shock, DO NOT expose to rain. Store indoors. DO NOT use on wet surfaces.
- This is not a toy. Close attention is necessary when used around or near children.
- Use only as described in this safety manual. Use only manufacturer's recommended attachments, accessories, replacement parts and filters.
- DO NOT use this backpack vacuum with damaged cord or plug. If the vacuum is not working as it should, because it has been dropped, damaged, left outdoors or dropped into water, contact an authorized service center or factory.
- DO NOT pull or carry by the cord, use cord as a handle, close a door on the cord, or pull the cord around sharp edges or corners. Keep cord away from heated surfaces.
- DO NOT unplug the vacuum by pulling the cord. To unplug, grasp the plug, not the cord.
- DO NOT handle the plug of the vacuum with wet hands.
- DO NOT put objects into openings. DO NOT use with any opening blocked. Keep free of dust, lint, hair and anything that may reduce air flow.
- Keep hair, loose clothing, fingers, and all body parts away from opening and moving parts.
- DO NOT pick up anything that is burning or smoking such as cigarettes, matches or hot ashes.

1.0 Safety Instructions Continued

Reduce the Risk of Fire, Electric Shock or Injury Continued

- DO NOT use without the proper cloth filtration bag, paper filter bag and other filters in place. Failure to do so, will VOID your warranty.
- DO NOT use the vacuum to pick up flammable or combustible liquids such as gasoline or use in areas where they may be present.
- Use extra care when cleaning on stairs.
- DO NOT use where oxygen or anesthetics are used.
- Turn off all controls before unplugging. Make sure the on/off switch is in the off position.
- The extension cord provided with this unit is 50-foot, 16/3-gauge wire and MUST be used with this unit to ensure grounding protection.
- Replace damaged or worn parts immediately with genuine, original equipment parts to maintain safety and to protect your limited warranty.
- DO NOT lubricate the motor.
- DO NOT tie extension cord to pigtail cord. This will damage the cord and will not be covered under warranty.
- DO NOT overstretch the safety power cord between the vacuum and the electrical outlet in the wall.
- DO NOT use without all filters correctly secured in place.
- When using the vacuum with a powerhead tool and connection, always turn off the vacuum and nozzle tool before connecting or disconnecting either the hose or power nozzle. Depending on your vacuum model, the hose may contain electrical wires. DO NOT use when damaged, cut or punctured.

Always turn OFF the vacuum before connecting, disconnecting or working on the vacuum. This vacuum must be connected to a properly grounded outlet only (see grounding instructions).

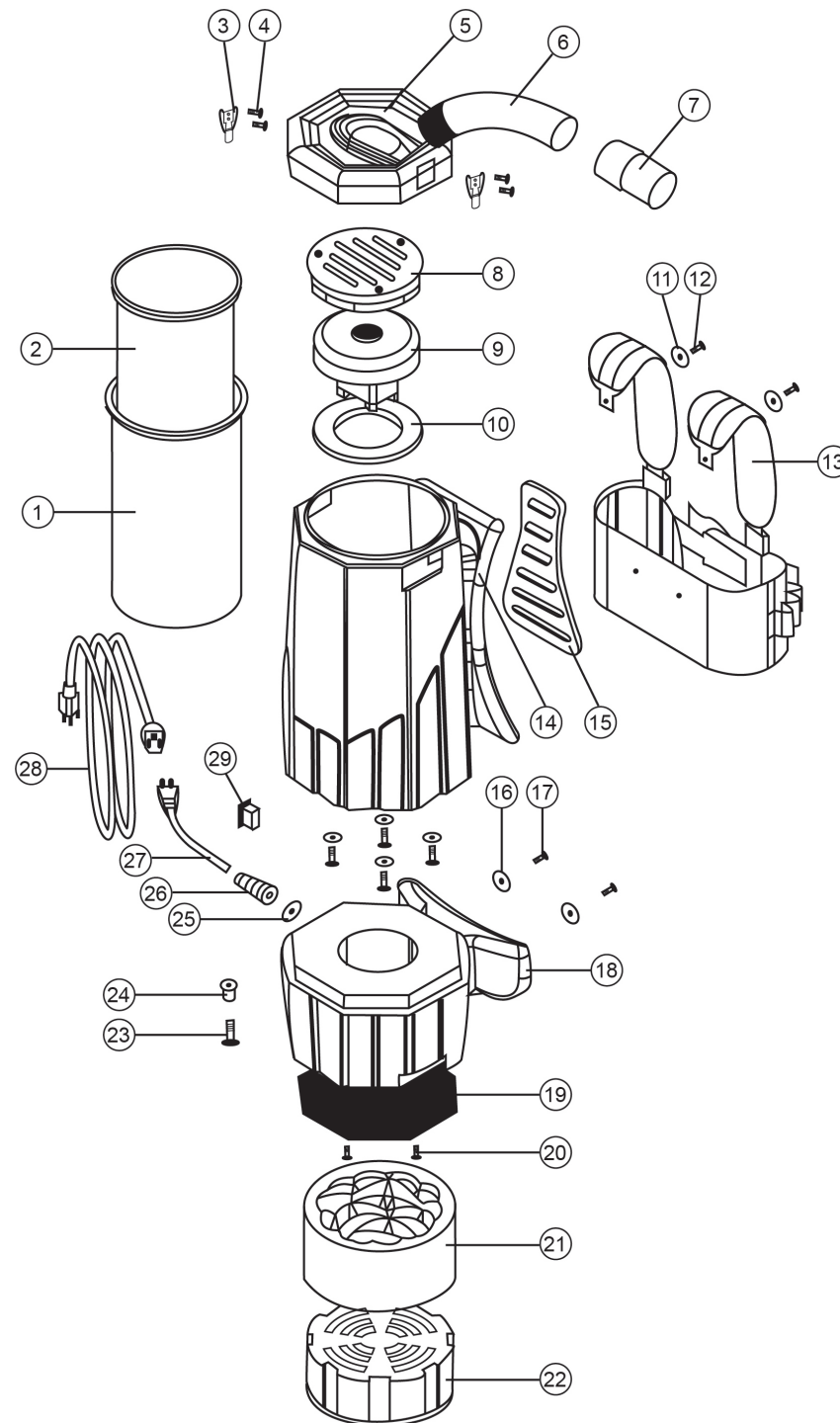
2.0 Grounding Instructions

DANGER: IMPROPER GROUNDING METHOD CAN RESULT IN A RISK OF ELECTRIC SHOCK.

Electrical equipment must be grounded. If it should malfunction or breakdown, grounding provides a path of least resistance for electrical current to reduce the risk of electric shock. The vacuum is equipped with a cord containing a grounding conductor and grounding plug. The plug must be inserted into an appropriate outlet that is properly installed and grounded in accordance with all local codes and ordinances.

If repair or replacement of the cord or plug is necessary, DO NOT connect the grounded wire to a flat bed terminal. The wire with insulation having an outer surface that is green with or without yellow stripes is the grounding wire.

6.0 Machine Schematic Drawing



5.0 Troubleshooting Guide

CAUTION: Always disconnect power cord before servicing vacuum.
WARNING: Repairs should only be performed by an authorized service center.

PROBLEM: Loss of vacuum

CAUSE	SOLUTION
Cap is damaged	Inspect and replace if needed
Faulty vacuum motor	Call manufacturer or service center
Full paper bag filter	Replace paper filter bag
Clogged hose or wand	Remove obstruction
Loose or broken fan	Call manufacturer or service center

PROBLEM: Motor is not running

CAUSE	SOLUTION
Faulty on/off switch	Call manufacturer or service center
Power cord defective	Call manufacturer or service center
Loose connection or wiring	Call manufacturer or service center
Motor defective	Call manufacturer or service center
Blown fuse or tripped circuit breaker	Replace fuse or reset circuit breaker

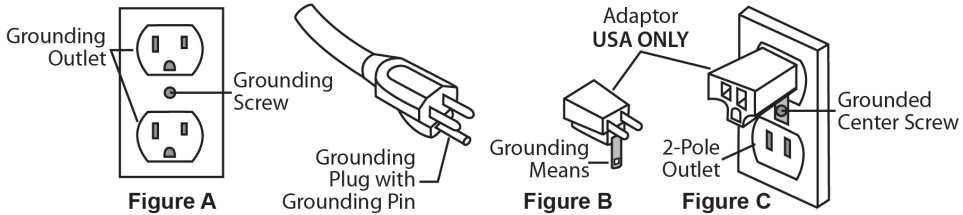
PROBLEM: Dust blowing from vacuum when running

CAUSE	SOLUTION
Full paper bag	Replace filter bag
Paper filter bag not installed properly	Reinstall or replace paper filter bag properly
Cloth filter bag is dirty	Clean cloth filter bag
Cloth or paper filter bag is torn	Replace

2.0 Grounding Instructions Continued

This electric equipment is for use on a normal 120 volt circuit. It has a grounded plug that looks like a the plug illustrated in (Fig A). A temporary adapter that looks like the adapter illustrated in (Fig B and C) may be used to connect this plug into a 2-pole receptacle as shown in (Fig B) if a properly grounded outlet is not available.

The temporary adapter should be used only until a properly grounded outlet (Fig A) can be installed by a qualified electrician. The green color rigid ear lug or the like extending from the adapter must be connected to a permanent ground such as a properly grounded outlet box cover. Whenever the adapter is used, it must be held in place by a metal screw.



WARNING:

Improper connection of the equipment grounding conductor can result in a risk of electric shock. Check with a qualified electrician or service person if you are in doubt as to whether the outlet is properly grounded. **DO NOT** modify the plug provided with the equipment. If it will not fit into the outlet, have a proper outlet installed by a qualified electrician.

NOTE: In Canada, the use of a temporary adapter is not permitted by the Canadian Electrical Code.

3.0 Care of your Backpack Vacuum Cleaner

Treat your vacuum cleaner as you would any other high grade precision made product. Dropping, unreasonable bumping across thresholds and other misuses may result in a damaged unit which will not be covered under warranty.

When not in use, the power cord should be wrapped around the molded-in cord wrap for storage. After each use, wipe the vacuum body, accessories and power cord with a slightly damp cloth.

WARNING: DO NOT use vacuum without the proper cloth filtration bag, paper filter bag and other filters in place. Failure to do so, will VOID your warranty.

If using vacuum in a paint, sawdust or drywall environment, you must dispose of paper filter bag and shakeout cloth filter bag after each use. Failure to do so will cause severe damage to your vacuum and void your warranty. Dispose of paper filter bag in a fireproof container. The combination of urethane and wood, may result in a combustion.

4.0 Operation and Assembly Instructions

PREPARATION AND OPERATION. DRY ONLY!

This vacuum is equipped with an air-thru motor and is designed for dry pickup only. Unpack the carton and remove the vacuum and attachments (if purchased with tools).

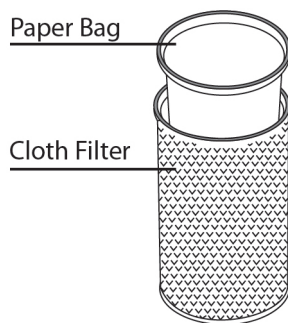
Getting Started:

1. Make sure your on/off switch is in the OFF position.
2. Remove lid and check to make sure you have both a cloth filter bag and paper filter bag in place. Secure lid back onto the vacuum body, tightening securely. Both bags must be used at all times. Any damage resulting from the lack of using both bags will not be covered under warranty.
3. Thread your safety power cord around the built in cord knob on the side of the backpack. Do not tie or loop the pigtail cord with the extension cord.
4. Loosen the shoulder and waist belt straps and slide vacuum on.
5. Connect and tighten waist belt ensuring that majority of the weight is on your hips, not your shoulders.
6. Adjust the shoulder straps for comfort.
7. Connect the sternum straps for added support and ideal fit.
8. Plug your vacuum into a properly installed outlet.
9. Turn unit on and proceed with vacuuming.
10. Always store vacuum, safety power cord and tools in a cool dry place indoors.

NOTE: The weight of the vacuum should be distributed on your hips. Adjust any strap as needed for your custom fit.

To Change Paper Filter Bag:

1. Unclip lid latches and lift lid off of the body.
2. Remove full paper bag from the tank and dispose of properly.
3. Take new paper filter bag and set inside cloth filter bag, expanding it to the sides of the cloth filter bag.
4. Reinstall the top cap, clamping the lid latches down tightly.



Cloth Filter Maintenance:

The cloth filter should be inspected and cleaned each time you empty the tank. DO NOT wash the cloth filter. It could cause shrinkage of the cloth and damage to the gasket. Simply shake off any dust or loose particles and brush the exposed surface with a soft bristle brush.

CAUTION: Always exercise caution when handling the vacuum. Dropping the vacuum could cause permanent damage to the internal components.

4.0 Operation and Assembly Instructions Continued

HEPA Models:

When the white disk inside your dome filter is discolored, replace it with a new HEPA filter with bag support. Replacement time frame of the HEPA filter depends on the frequency and application of use. For best results, replace every six (6) months.

IMPORTANT:

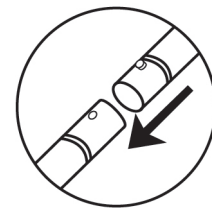
Following the instructions above is critical in prolonging the life of your vacuum. All filters must be used at all times.

The backpack comes assembled, but you will need to install the hose to the wand, and the wand to the attachment.

Assembly of Attachments:

Wand Assembly (for 2-Piece Wand Only):

- Align the button lock of the upper wand section with the opening for the button lock on the lower wand section.
- Push the sections together until the button lock slides into place and the lock is secured.



To Connect Wand to Hose:

- Connect the tapered end of the wand to the swivel cuff at the end of the hose.

To Connect Wand to Attachments:

- Turn wand nut counterclockwise approximately four (4) complete turns.
- Insert the tool into wand and coupling.
- While holding the tool in place, turn nut clockwise until wand nut is fully locked.

