



## BISSELL COMMERCIAL LOWBOY 9000 DISTRIBUTOR PARTS LIST

100 Armstrong Rd., Suite 101 Plymouth, MA 02360  
(800) 242-1378 Fax (508) 732-9171

Revised 5/30/18

Diagram Number	Part Description	Part Number	Distributor Price
1	SWITCH BOX BACK	ME-A-104	\$ 34.00
2	HANDLE TUBE SCREW	ME-B-23	\$ 1.00
3	SWITCH BOX CLOSING SCREWS	ME-B-21	\$ 1.00
4	STRAIN RELIEF CLIP	ME-M-213	\$ 1.92
5	SWITCH PLATE SCREW	ME-B-68	\$ 1.00
6	1" RUBBER SPACER	ME-M-218B	\$ 0.30
7	BLACK HAND GRIP	ME-M-218	\$ 2.40
8	HANDLE TUBE INSERT	ME-M-247	\$ 19.90
9	HANDLE TUBE ASSEMBLY	ME-M-206	\$ 69.00
10	CABLE HOOK SCREW	ME-B-2	\$ 1.00
11	CABLE HOOK	ME-A-164	\$ 18.32
12	YOKE TUBE MOUNT BOLT	ME-B-18A	\$ 1.00
13	YOKE NUT	ME-B-10	\$ 1.02
14	YOKE	ME-A-1001A	\$ 22.48
15	YOKE BOLT	ME-B-14	\$ 3.22
16	HANDLE TUBE CABLE	ME-G-16	\$ 24.08
17	BLACK RUBBER CABLE CONNECTOR	ME-M-249	\$ 2.00
18	CABLE GROMMET	ME-B-63	\$ 2.00
19	50' CABLE 14/3	ME-G-14-50	\$ 99.00
20	INSULATED FLAG WIRE CONNECTOR	ME-G-48	\$ 3.00
21	ON - OFF SWITCH PLATE ASSY	ME-G-30-AB	\$ 17.30
22	SWITCH MOUNTING PLATE	ME-G-30-B	\$ 4.00
23	GROUND WIRE SCREW	ME-B-1	\$ 1.00
24	INT.TOOTH LOCKWASHER	ME-B-35	\$ 1.00
25	FLAT HEX NUT	ME-B-33	\$ 1.00
26	TRIGGER RETURN SPRING	ME-G-30-C-T057	\$ 2.00
27	LABEL - SWITCHBOX		Special Order
28	SWITCH BOX FRONT	ME-A-103	\$ 36.72
29	WIRE NUT	ME-G-47	\$ 1.00
30	TRIGGERS	ME-A-105	\$ 5.08
31	16" CROSSBAR	ME-M-211-A	\$ 12.70
32	CAP - SWITCHBOX SIDE	ME-O-205A	Special Order
33	TRIGGER PINS	ME-B-70	\$ 2.00
34	CROSS BAR SCREW	ME-B-22	\$ 1.00
35	CAP SWITCHBOX BACK	ME-O-205B	\$ 0.32
36	ACORN NUT TO HOLD FOOT PEDAL TO HANDLE	ME-B-44	\$ 0.96
37	FOOT PEDAL	ME-C-305	\$ 4.40
38	NYLON WASHER GLUED TO FOOT PEDAL	ME-O-22	\$ 0.20
39	AXLE TO HOLD FOOT PEDAL TO HANDLE	ME-O-26	\$ 0.78
40	LARGE MILLED PIN	ME-O-206	\$ 10.30
41	BLOCK SPRING	ME-C-306	\$ 2.00
42	SMALL PIN UNDER BLOCK	ME-O-27	\$ 1.00
43	ALUMINUM BLOCK	ME-C-300	\$ 40.00
44	BOLT HANDLE BRACKET MOUNTING	ME-B-22	\$ 1.00



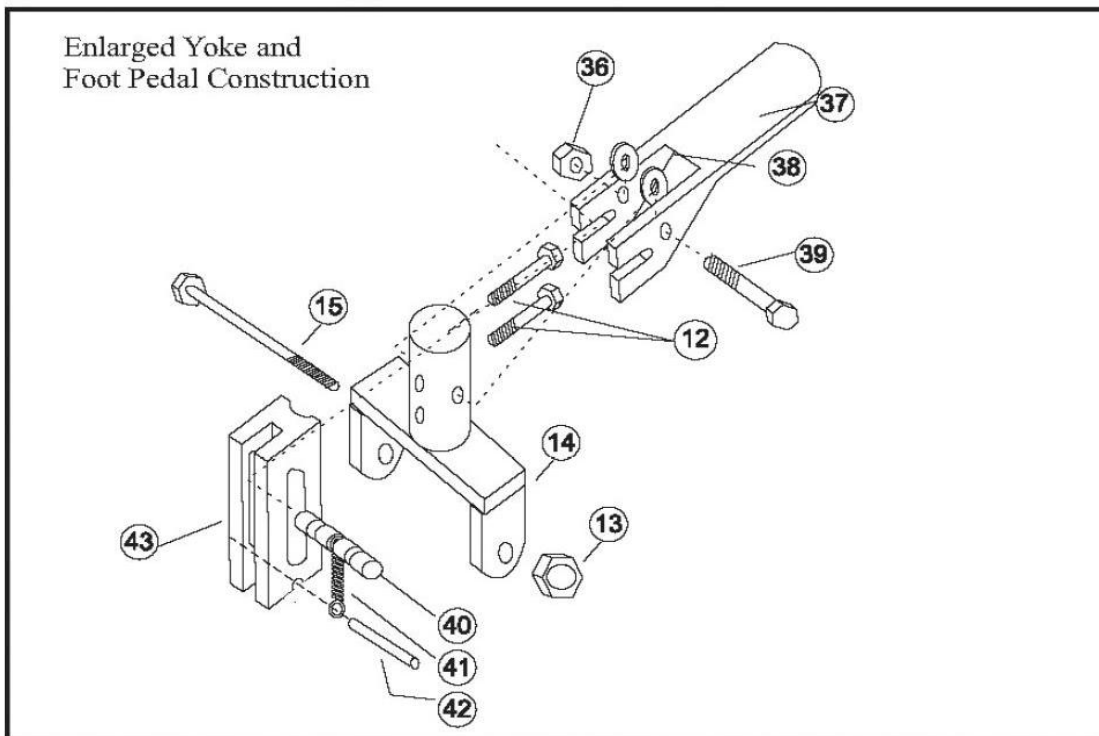
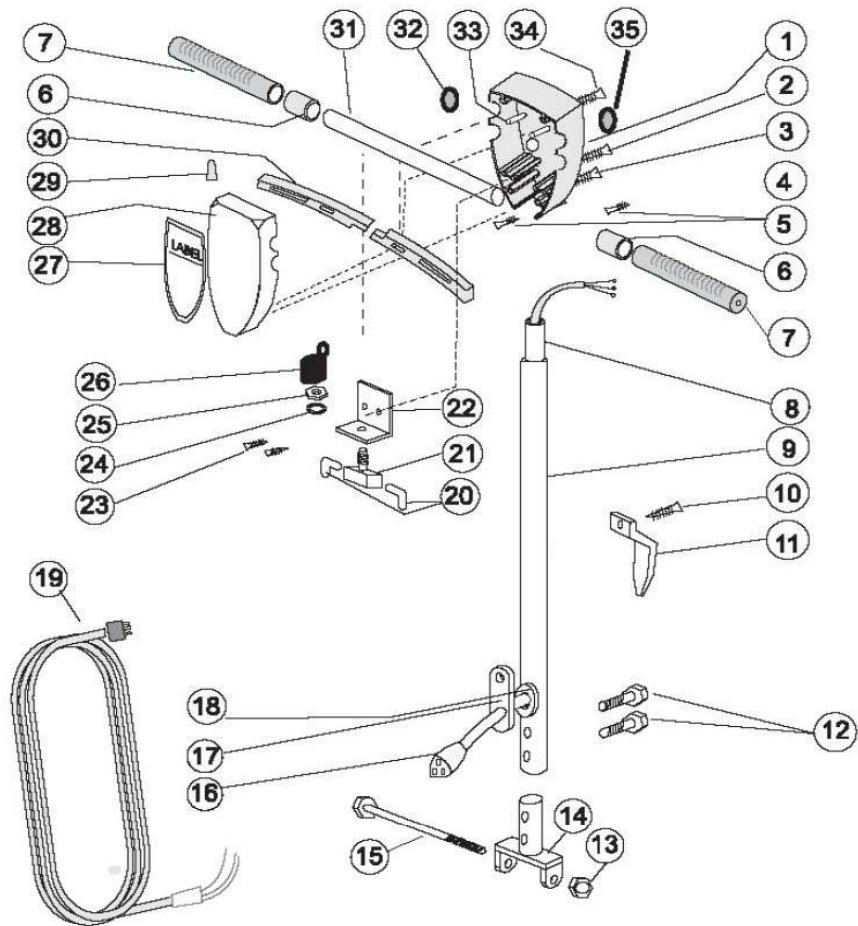
**BISSELL COMMERCIAL  
LOWBOY 9000 DISTRIBUTOR PARTS LIST**

100 Armstrong Rd., Suite 101 Plymouth, MA 02360  
(800) 242-1378 Fax (508) 732-9171

Revised 5/30/18

<b>Diagram Number</b>	<b>Part Description</b>	<b>Part Number</b>	<b>Distributor Price</b>
45	HANDLE BRACKET	ME-A-100	\$ 40.00
46	AXLE NUT	ME-B-77	\$ 0.96
47	NYLON WASHER	ME-O-48	NLA
48	5" NON MARKING WHEELS	ME-M-246	\$ 18.20
49	AXLE	ME-B-76A	\$ 1.00
50	APRON CASTING WITH WHEEL MOUNTING EARS	ME-A-175	Special Order
51	NUT FOR BRACKET BOLT	ME-B-27	\$ 0.64
52	CAP PLUGS	ME-O-205	\$ 0.88
53	FEMALE SNAP RIVETED TO APRON CAST	ME-O-23	\$ 0.56
54	MOTOR BOLT	ME-B-143	\$ 2.84
55	GREEN 19" BUMPER	ME-M-232-19/GN	\$ 12.72
56	NUT JAM	ME-O-03-0056601	\$ 0.36
57	FLY WHEEL PLATE ASSEMBLY	ME-O-53214-A	\$ 99.00
58	PAN BOTTOM ASSEMBLY	53159-01-0000	\$ 300.00
59	SCREWS FOR PAN BOTTOM ASSEMBLY	ME-O-03-00568	\$ 4.00
60	MOTOR BDP-C LEESON 3/4 HP LB9000	ME-MOTOR-BDP/C	\$ 450.00

# LowBoy 9000



# LowBoy 9000

